

YG-DCO-012-C(B)

Yorkshire Green Energy Enablement (GREEN) Project

Volume 2

Document 2.5.3(B) Land Plan Section C

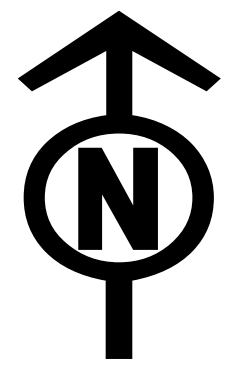
Final Issue B

February 2023

Planning Inspectorate Reference: EN020024

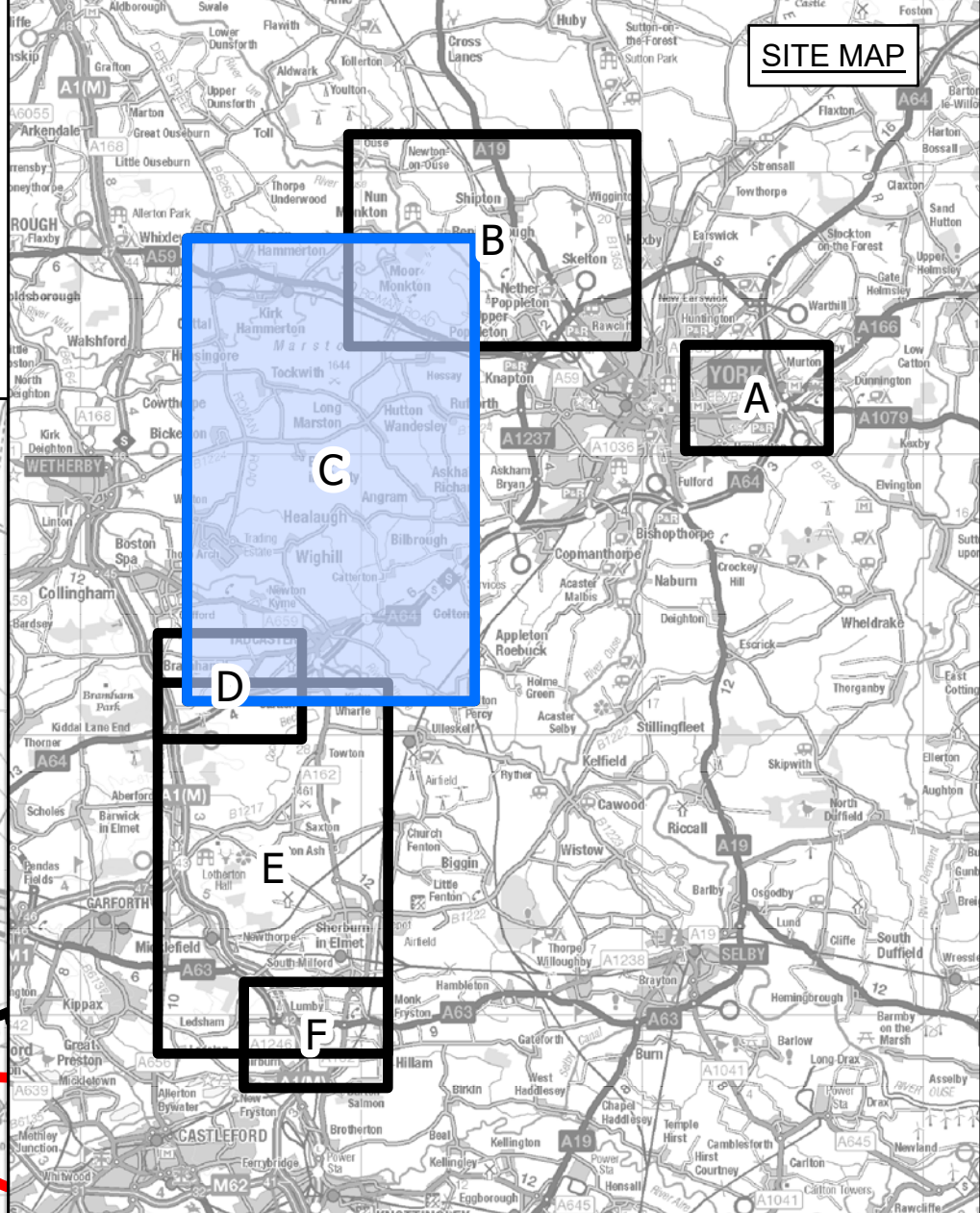
Infrastructure Planning (Applications: Prescribed Forms and
Procedure) Regulations 2009 Regulation 5(2)(i) - (ii)(iii)

nationalgrid

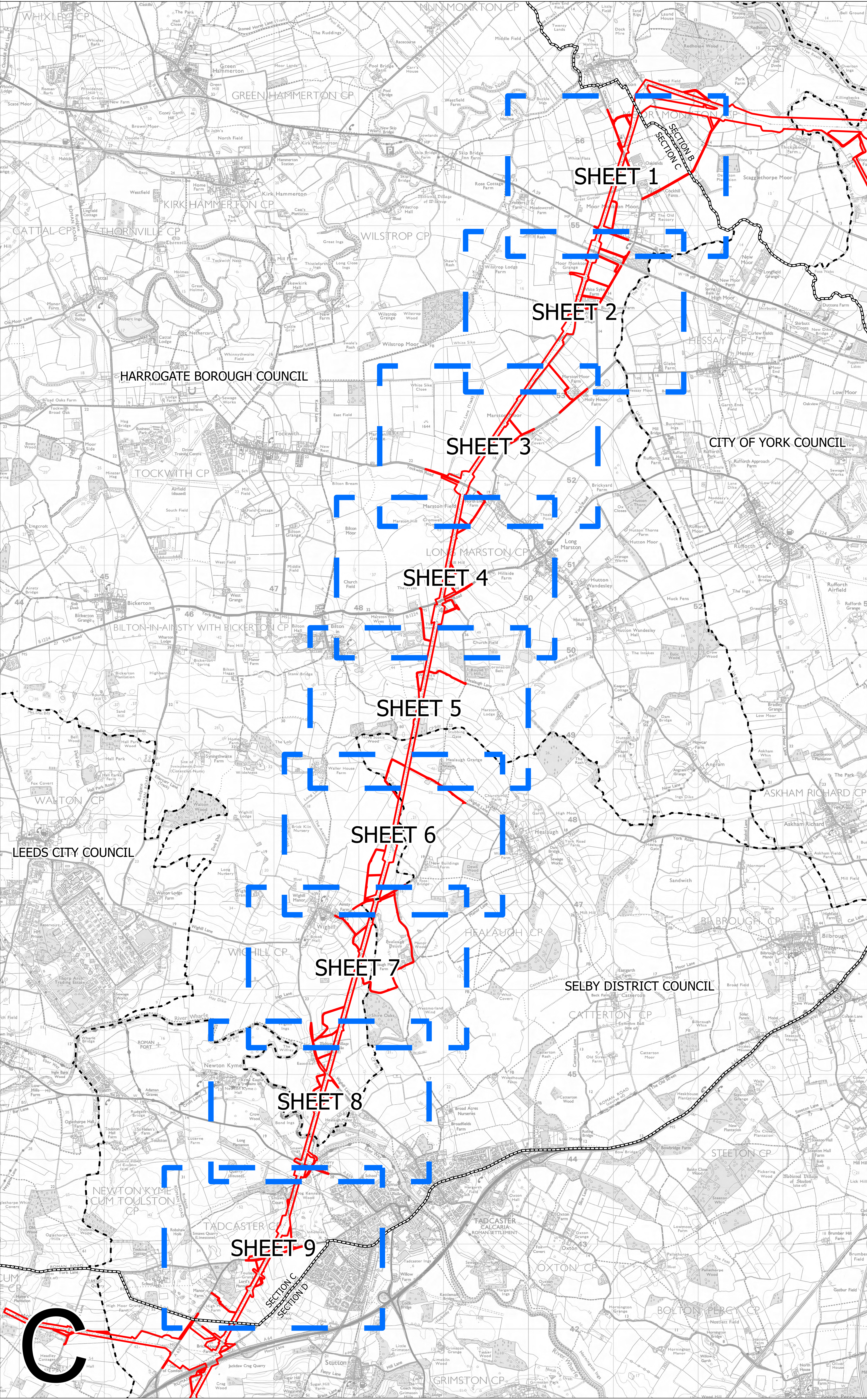


NATIONAL GRID (YORKSHIRE GREEN ENERGY ENABLEMENT PROJECT) ORDER
 LAND KEY PLAN
 REGULATION 5(2)(i) - (ii)(iii)
 SECTION C, SHEET 1 OF 1

SITE MAP



- LEGEND**
- LOCAL AUTHORITY BOUNDARY
 - SECTION BOUNDARY
 - ORDER LIMITS
 - SHEET INDEX



Notes

This drawing is scaled at paper size A0, therefore any prints taken at smaller sizes will affect accuracy of the measurement units and should not be scaled against.

For additional detail on the plan suites, please refer to Document 2.3 Plan Guidance Document, located in Volume 2 of the DCO Application.

The local authorities' boundaries and titles are correct at the time of submission. North Yorkshire County Council and its 7 districts are expected to form a new single council (North Yorkshire Council) on 1 April 2023.

Coordinate System: British National Grid
 Sheet X Centroid Coordinate: 448887 Sheet Y Centroid Coordinate: 449414

BACKGROUND MAPPING INFORMATION HAS BEEN REPRODUCED FROM THE ORDNANCE SURVEY BY PERMISSION OF ORDNANCE SURVEY OF THE CONTROLLER OF HER MAJESTY'S STATIONERY OFFICE. CROWN COPYRIGHT ORDNANCE SURVEY © BLUESKY INTERNATIONAL LTD © NATIONAL GRID ELECTRICITY - 100024241.

Issue	Date	Remarks	MG	SF	EMD
A	01/11/2022	FOR DCO SUBMISSION			

Title
 NATIONAL GRID (YORKSHIRE GREEN ENERGY ENABLEMENT PROJECT) ORDER LAND KEY PLAN REGULATION 5(2)(i) - (ii)(iii) SECTION C, SHEET 1 OF 1

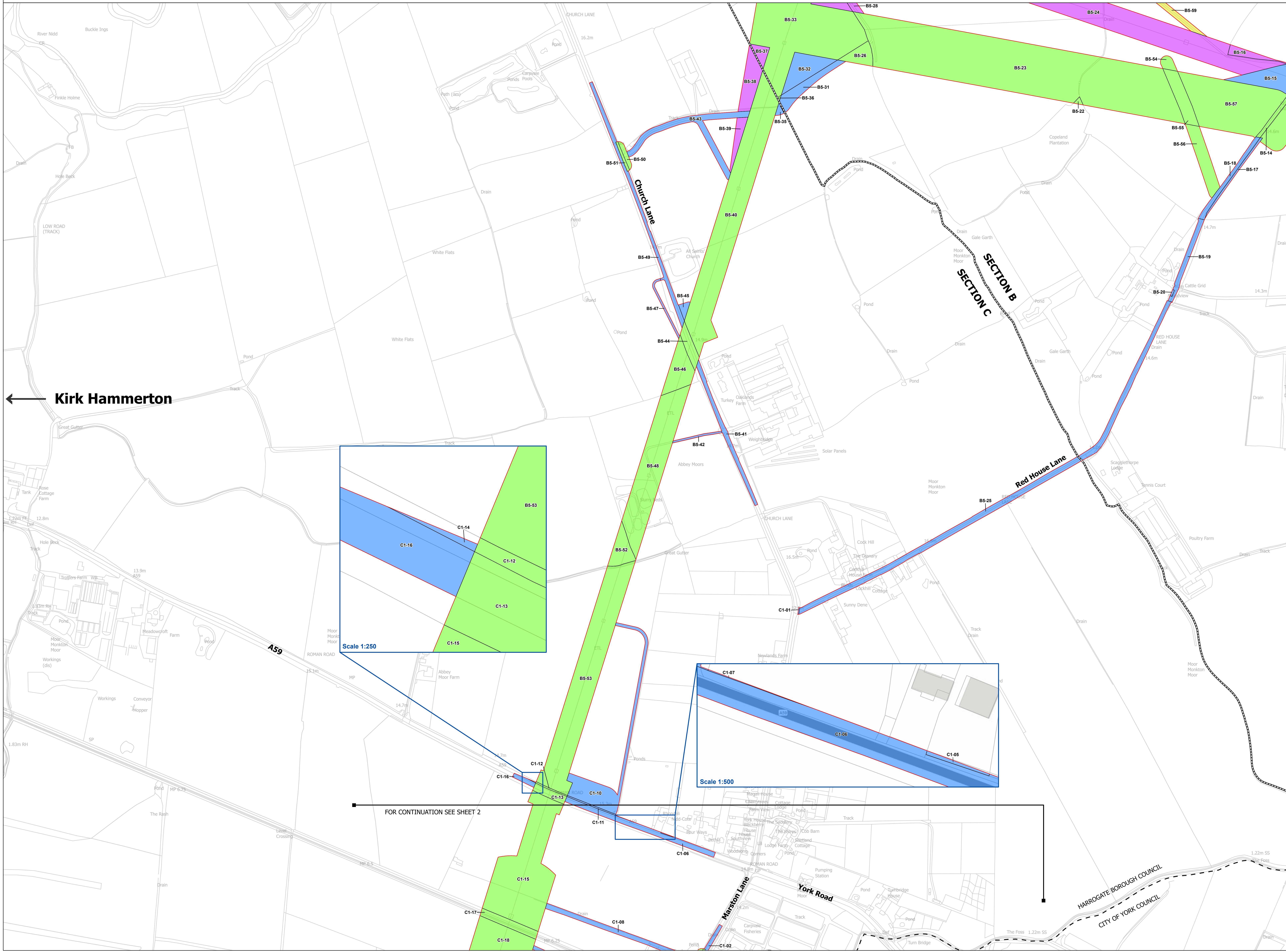
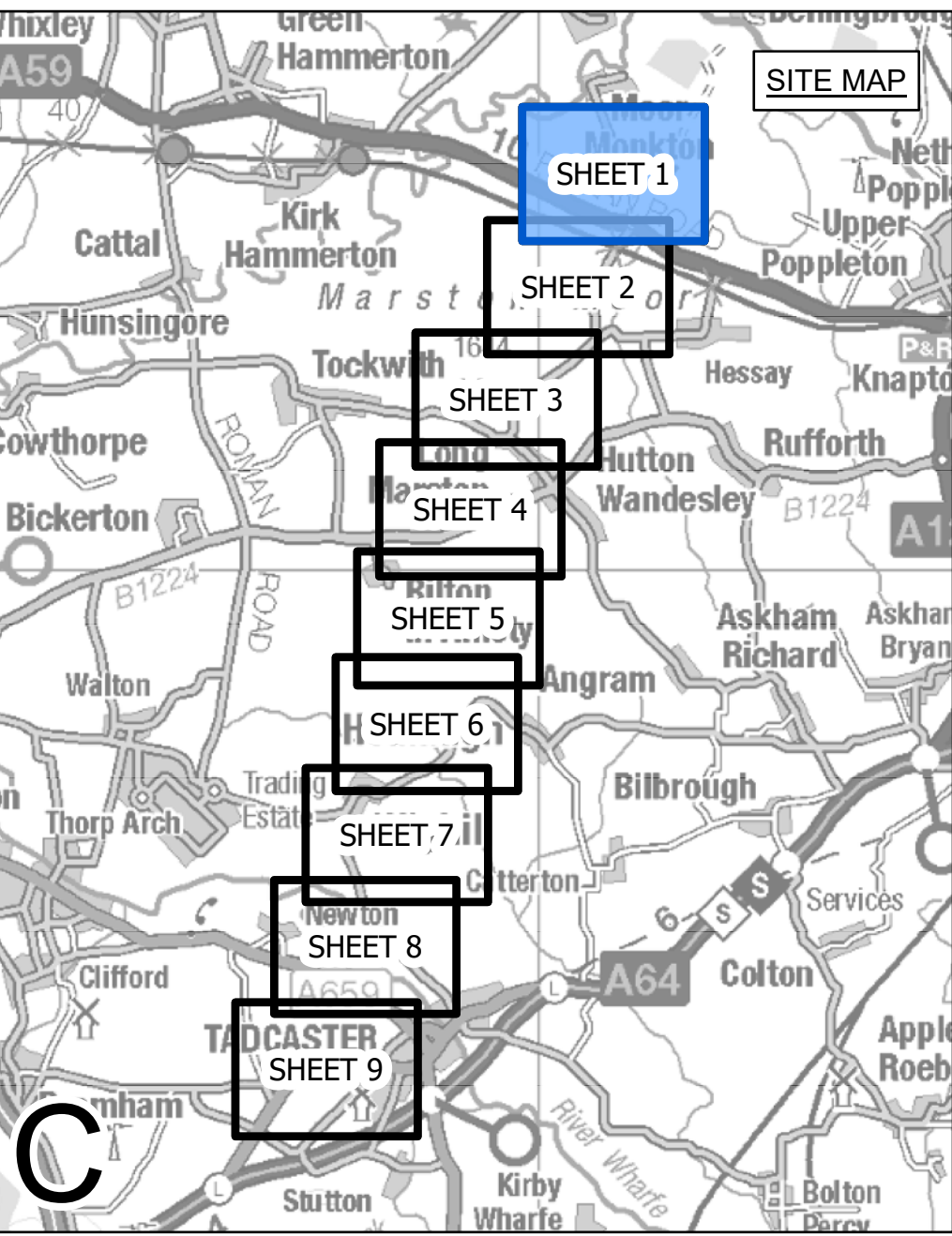
Application Number
 EN020024

National Grid Drawing Reference
 DCO_C/LP/KP/01

Scale	Sheet Size	Sheet	Issue
1:15,000	A0	SHEET 1 OF 1	A



NATIONAL GRID (YORKSHIRE GREEN ENERGY ENABLEMENT PROJECT) ORDER
 LAND PLAN
 REGULATION 5(2)(i) - (ii)(iii)
 SECTION C, SHEET 1 OF 9



LEGEND

- - LOCAL AUTHORITY BOUNDARY
- SECTION BOUNDARY
- ORDER LIMITS

PLOTS

- CLASS 2 - COMPULSORY ACQUISITION OF RIGHTS FOR THE AUTHORISED DEVELOPMENT
- CLASS 3 - COMPULSORY ACQUISITION OF RIGHTS OF ACCESS
- CLASS 4 - TEMPORARY USE FOR CONSTRUCTION AND MITIGATION
- CLASS 6 - TEMPORARY USE FOR ACCESS

Notes
 This drawing is scaled at paper size A0, therefore any prints taken at smaller sizes will affect accuracy of the measurement units and should not be scaled against.

All easements, servitudes and private rights are proposed to be extinguished on land that is to be acquired unless stated otherwise in the Book of Reference (Volume 4, Document 4.3).

For additional detail on the plan suites, please refer to Document 2.3 Plan Guidance Document, located in Volume 2 of the DCO Application.

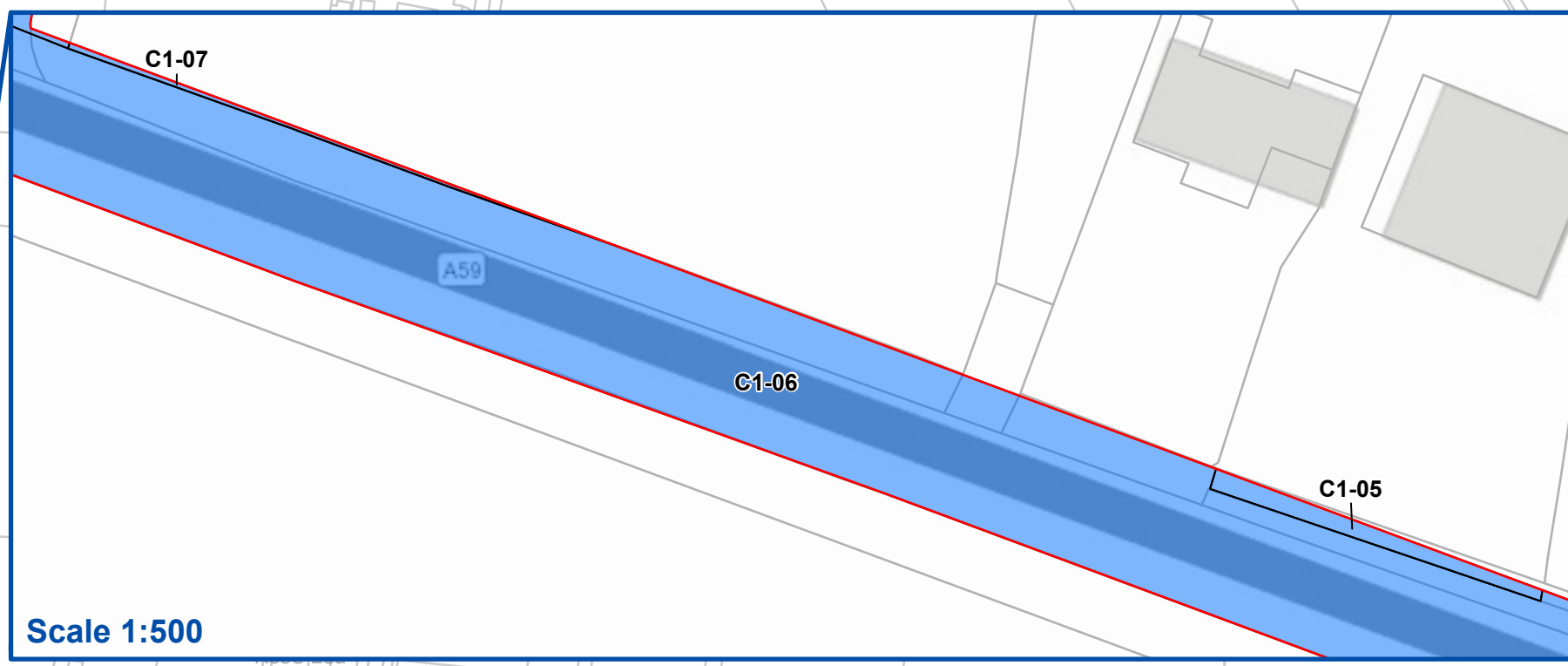
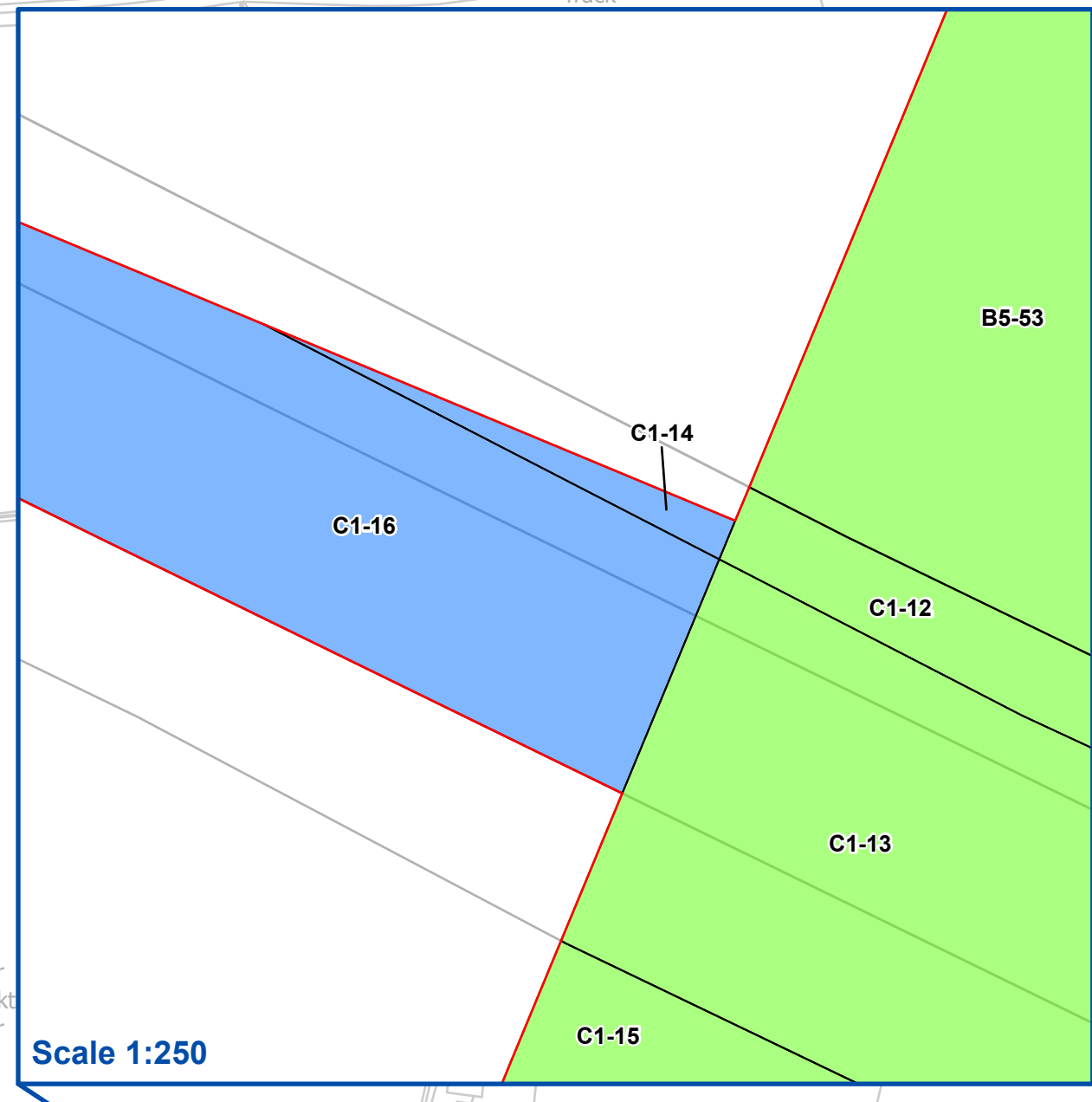
The local authorities' boundaries and titles are correct at the time of submission. North Yorkshire County Council and its 7 districts are expected to form a new single council (North Yorkshire Council) on 1 April 2023.

Coordinate System: British National Grid
 Sheet X Centroid Coordinate: 451042 Sheet Y Centroid Coordinate: 455585



BACKGROUND MAPPING INFORMATION HAS BEEN REPRODUCED FROM THE ORDNANCE SURVEY BY PERMISSION OF ORDNANCE SURVEY OF THE CONTROLLER OF HER MAJESTY'S STATIONERY OFFICE. CROWN COPYRIGHT ORDNANCE SURVEY ©. BLUESKY INTERNATIONAL LTD ©. NATIONAL GRID ELECTRICITY - 100024241.

Issue	Date	Remarks	Drawn	Checked	Approved
B	14/02/2023	S51 ADVICE UPDATE	MG	SF	EMD
A	01/11/2022	FOR DCO SUBMISSION	MG	SF	EMD



FOR CONTINUATION SEE SHEET 2

NATIONAL GRID (YORKSHIRE GREEN ENERGY ENABLEMENT PROJECT) ORDER LAND PLAN REGULATION 5(2)(i) - (ii)(iii) SECTION C, SHEET 1 OF 9

nationalgrid

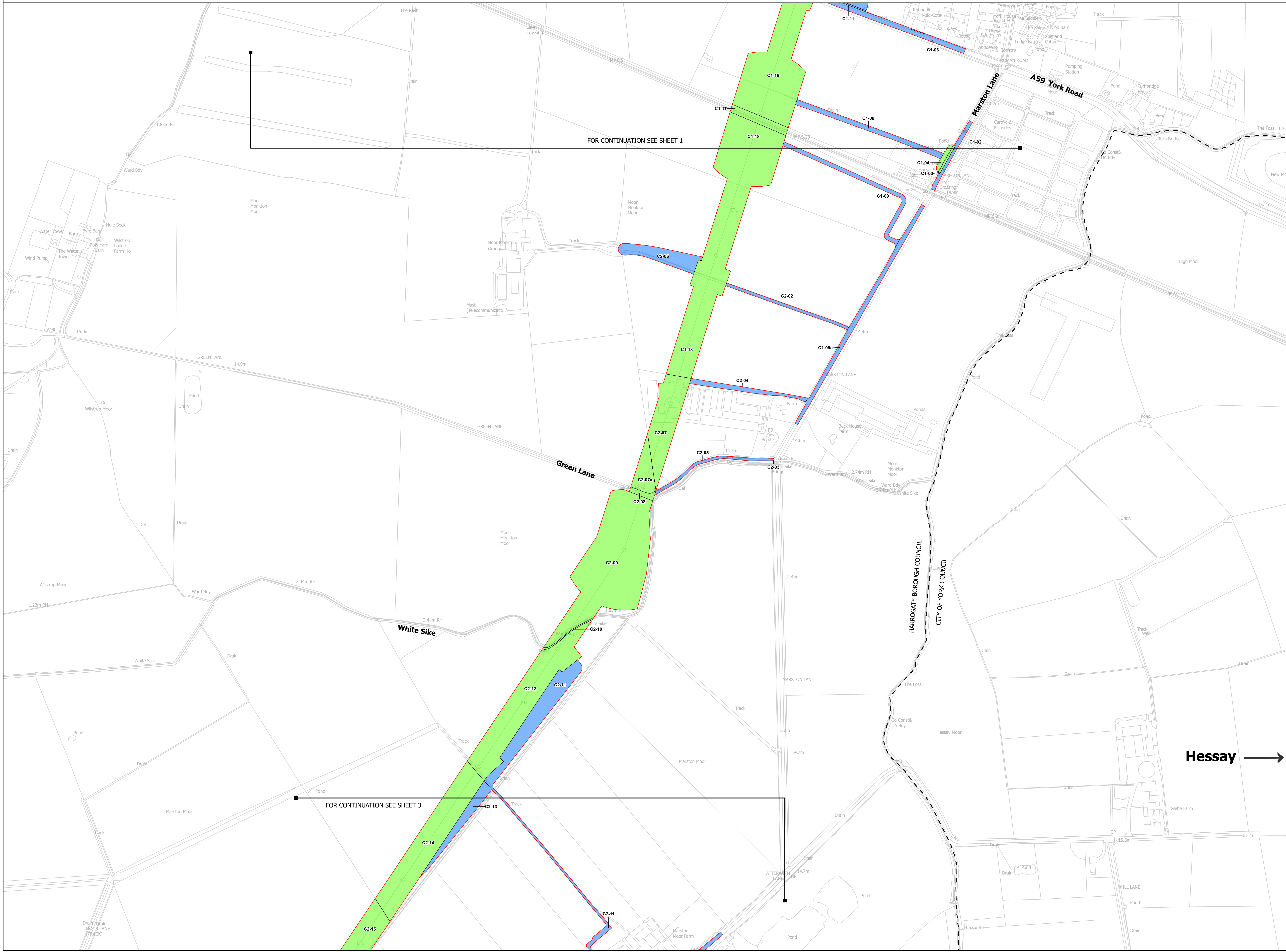
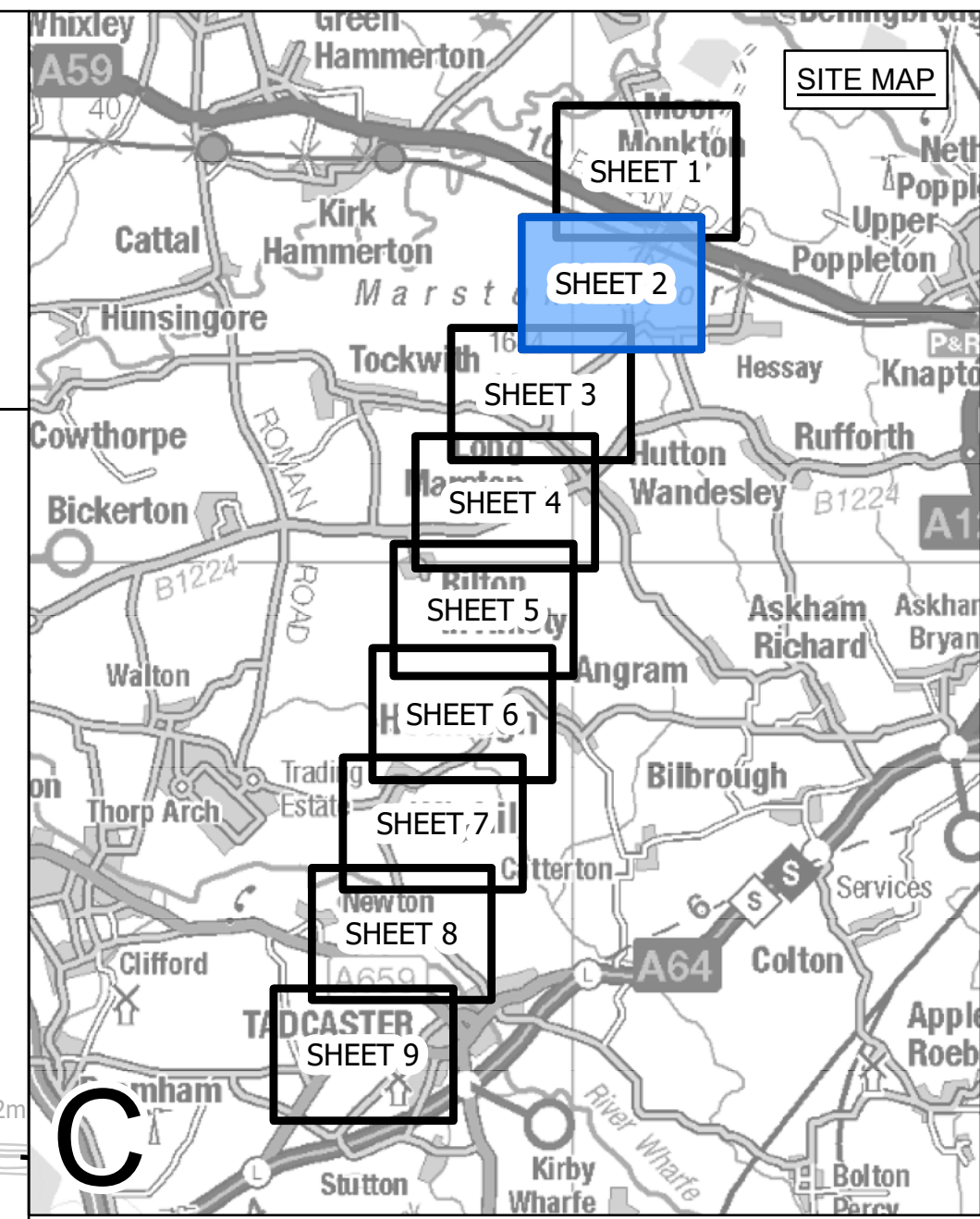
Application Number: EN020024

National Grid Drawing Reference: DCO_C/LP/PS/01

Scale	Sheet Size	Sheet	Issue
1:2,500	A0	SHEET 1 OF 9	B



NATIONAL GRID (YORKSHIRE GREEN ENERGY ENABLEMENT PROJECT) ORDER
 LAND PLAN
 REGULATION 5(2)(i) - (ii)(iii)
 SECTION C, SHEET 2 OF 9



- LEGEND**
- LOCAL AUTHORITY BOUNDARY
 - SECTION BOUNDARY
 - ORDER LIMITS
- PLOTS**
- CLASS 2 - COMPULSORY ACQUISITION OF RIGHTS FOR THE AUTHORISED DEVELOPMENT
 - CLASS 3 - COMPULSORY ACQUISITION OF RIGHTS OF ACCESS
 - CLASS 4 - TEMPORARY USE FOR CONSTRUCTION AND MITIGATION
 - CLASS 6 - TEMPORARY USE FOR ACCESS

Notes

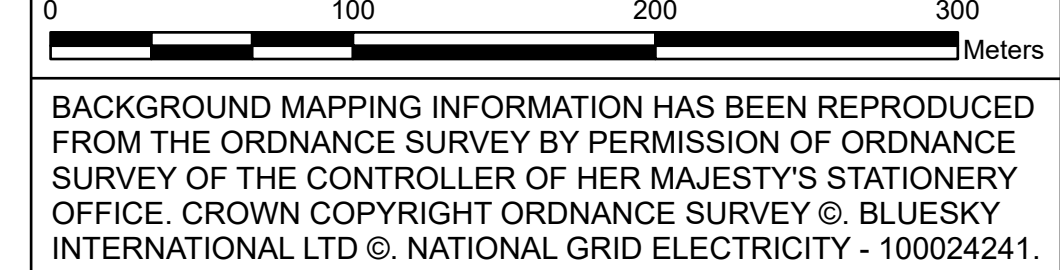
This drawing is scaled at paper size A0, therefore any prints taken at smaller sizes will affect accuracy of the measurement units and should not be scaled against.

All easements, servitudes and private rights are proposed to be extinguished on land that is to be acquired unless stated otherwise in the Book of Reference (Volume 4, Document 4.3).

For additional detail on the plan suites, please refer to Document 2.3 Plan Guidance Document, located in Volume 2 of the DCO Application.

The local authorities' boundaries and titles are correct at the time of submission. North Yorkshire County Council and its 7 districts are expected to form a new single council (North Yorkshire Council) on 1 April 2023.

Coordinate System: British National Grid
 Sheet X Centroid Coordinate: 450545 Sheet Y Centroid Coordinate: 453987



BACKGROUND MAPPING INFORMATION HAS BEEN REPRODUCED FROM THE ORDNANCE SURVEY BY PERMISSION OF ORDNANCE SURVEY OF THE CONTROLLER OF HER MAJESTY'S STATIONERY OFFICE. CROWN COPYRIGHT ORDNANCE SURVEY ©. BLUESKY INTERNATIONAL LTD ©. NATIONAL GRID ELECTRICITY - 100024241.

Issue	Date	Remarks	Drawn	Checked	Approved
B	14/02/2023	S51 ADVICE UPDATE	MG	SF	EMD
A	01/11/2022	FOR DCO SUBMISSION	MG	SF	EMD

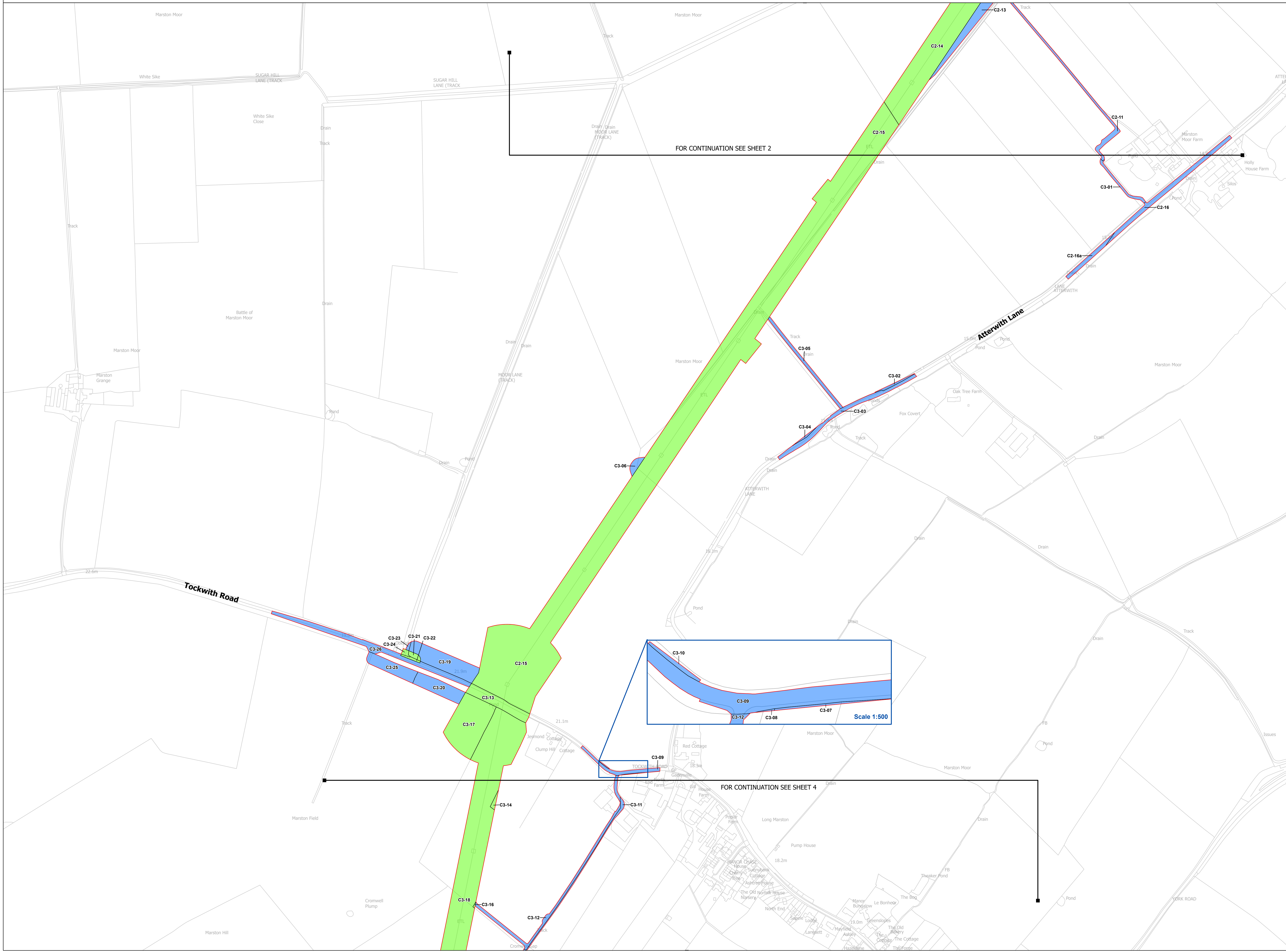
Title

NATIONAL GRID
 (YORKSHIRE GREEN ENERGY
 ENABLEMENT PROJECT) ORDER
 LAND PLAN
 REGULATION 5(2)(i) - (ii)(iii)
 SECTION C, SHEET 2 OF 9

nationalgrid			
Application Number	EN020024		
National Grid Drawing Reference			
DCO_C/LP/PS/02			
Scale	Sheet Size	Sheet	Issue
1:2,500	A0	SHEET 2 OF 9	B

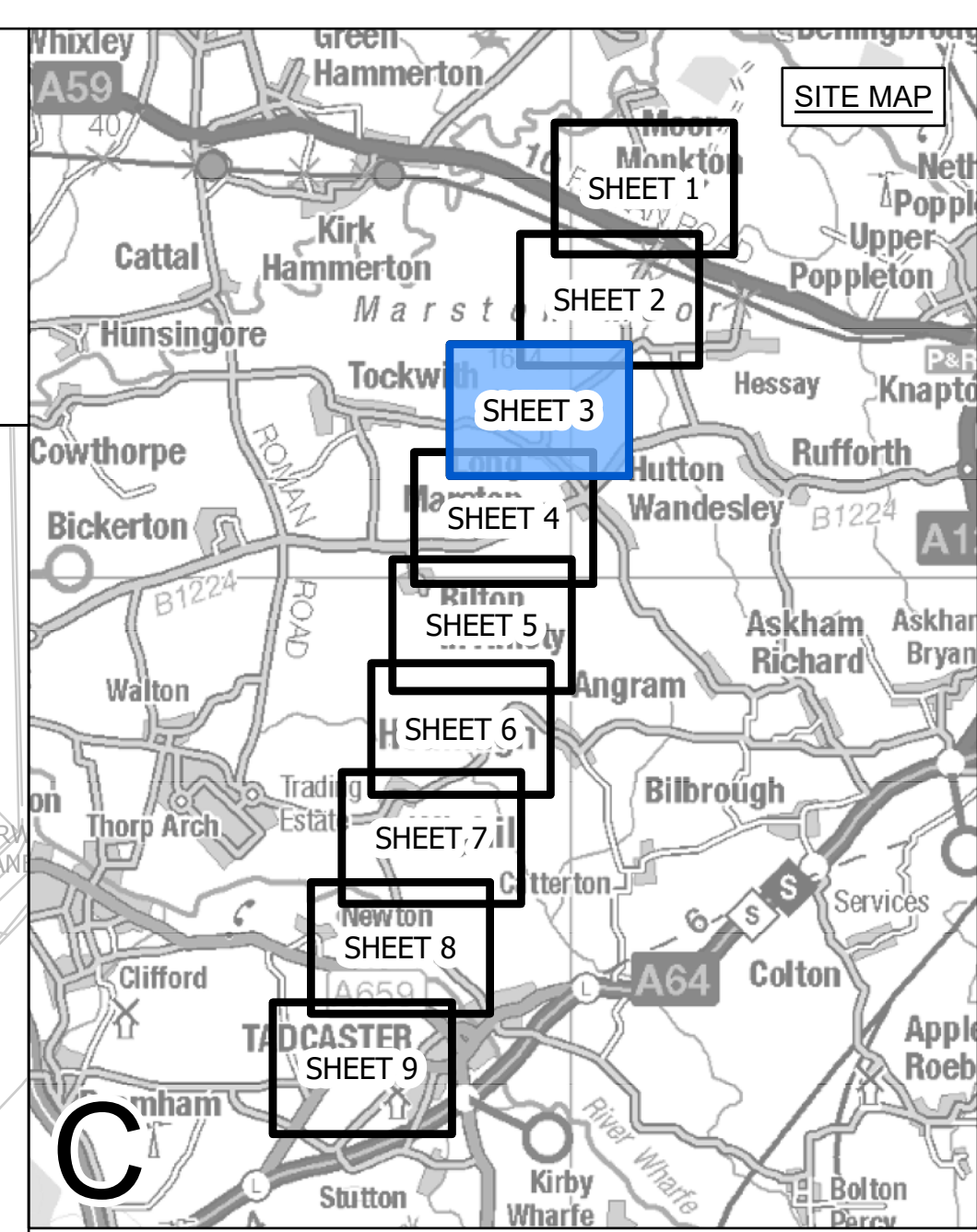
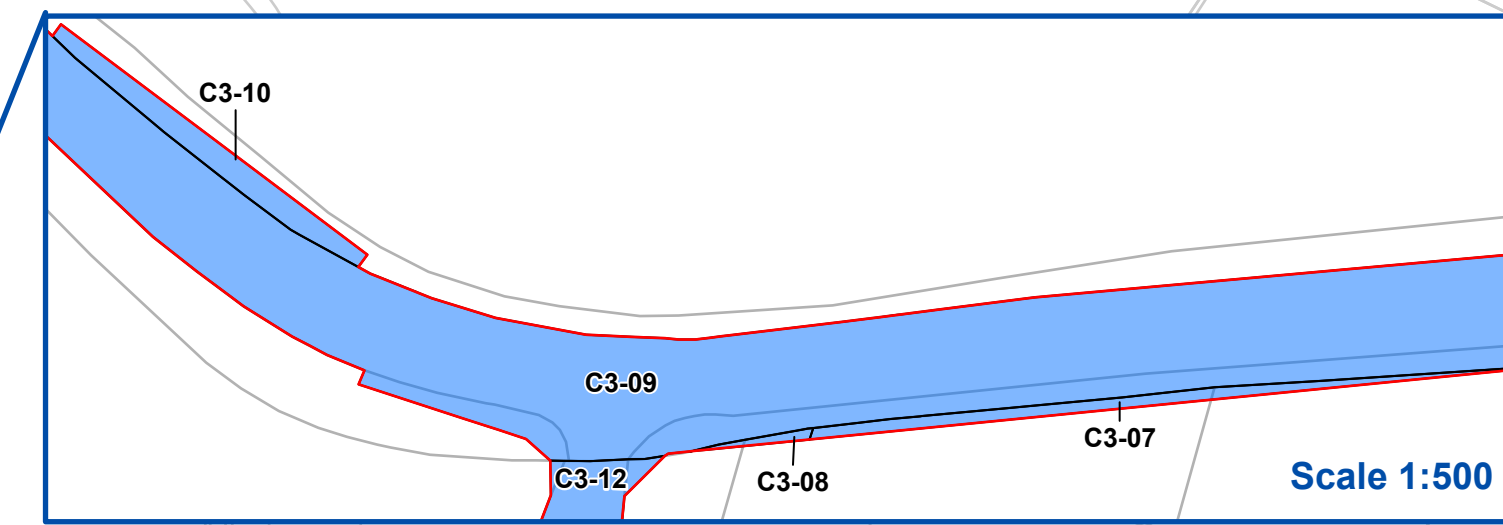


NATIONAL GRID (YORKSHIRE GREEN ENERGY ENABLEMENT PROJECT) ORDER
 LAND PLAN
 REGULATION 5(2)(i) - (ii)(iii)
 SECTION C, SHEET 3 OF 9



FOR CONTINUATION SEE SHEET 2

FOR CONTINUATION SEE SHEET 4



- LEGEND**
- LOCAL AUTHORITY BOUNDARY
 - SECTION BOUNDARY
 - ORDER LIMITS
- PLOTS**
- CLASS 2 - COMPULSORY ACQUISITION OF RIGHTS FOR THE AUTHORISED DEVELOPMENT
 - CLASS 3 - COMPULSORY ACQUISITION OF RIGHTS OF ACCESS
 - CLASS 4 - TEMPORARY USE FOR CONSTRUCTION AND MITIGATION
 - CLASS 6 - TEMPORARY USE FOR ACCESS

Notes
 This drawing is scaled at paper size A0, therefore any prints taken at smaller sizes will affect accuracy of the measurement units and should not be scaled against.

All easements, servitudes and private rights are proposed to be extinguished on land that is to be acquired unless stated otherwise in the Book of Reference (Volume 4, Document 4.3).

For additional detail on the plan suites, please refer to Document 2.3 Plan Guidance Document, located in Volume 2 of the DCO Application.

The local authorities' boundaries and titles are correct at the time of submission. North Yorkshire County Council and its 7 districts are expected to form a new single council (North Yorkshire Council) on 1 April 2023.

Coordinate System: British National Grid
 Sheet X Centroid Coordinate: 449533 Sheet Y Centroid Coordinate: 452403



BACKGROUND MAPPING INFORMATION HAS BEEN REPRODUCED FROM THE ORDNANCE SURVEY BY PERMISSION OF ORDNANCE SURVEY OF THE CONTROLLER OF HER MAJESTY'S STATIONERY OFFICE. CROWN COPYRIGHT ORDNANCE SURVEY ©. BLUESKY INTERNATIONAL LTD ©. NATIONAL GRID ELECTRICITY - 100024241.

Issue	Date	Remarks	Drawn	Checked	Approved
B	14/02/2023	S51 ADVICE UPDATE	MG	SF	EMD
A	01/11/2022	FOR DCO SUBMISSION	MG	SF	EMD

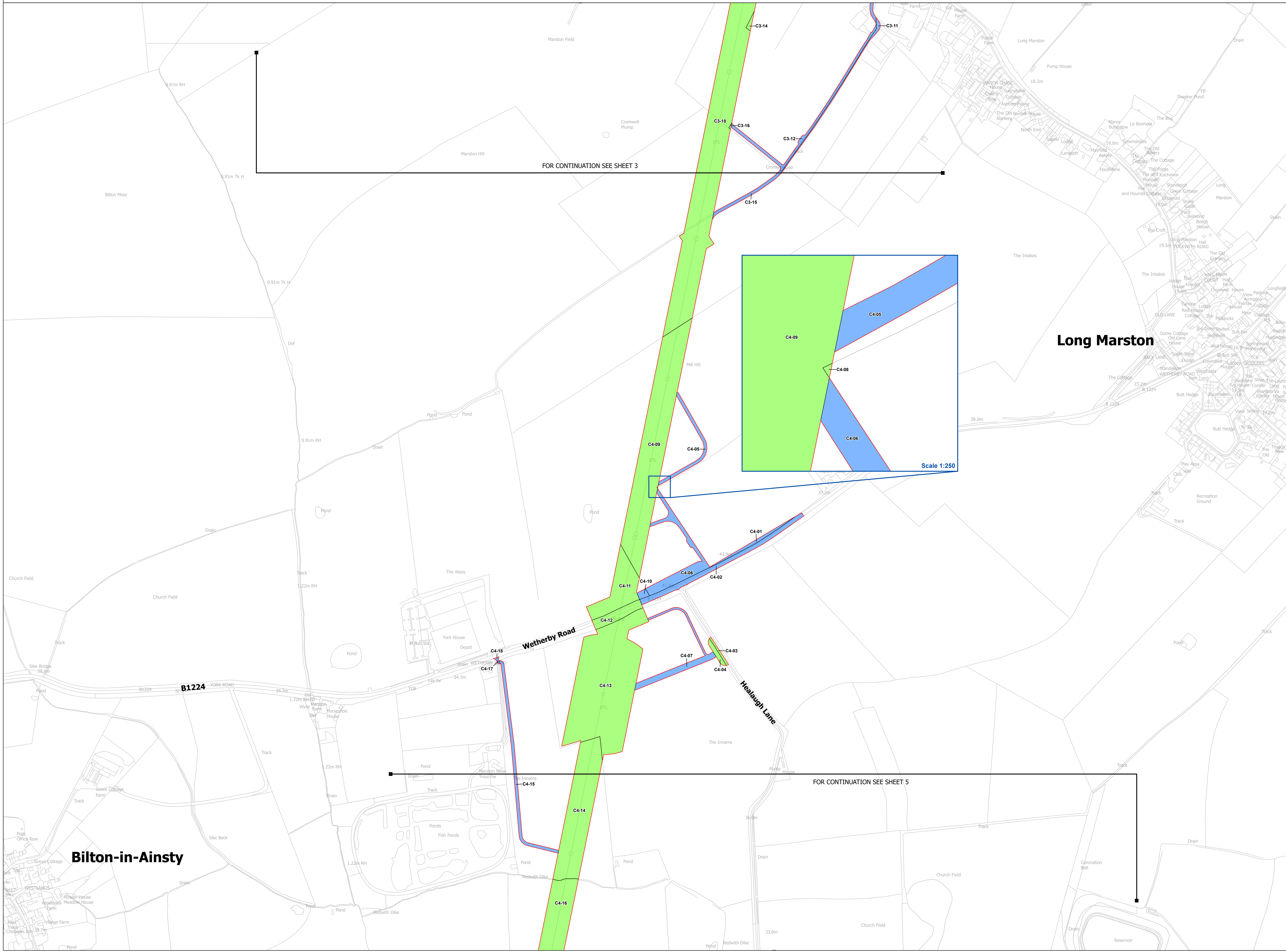
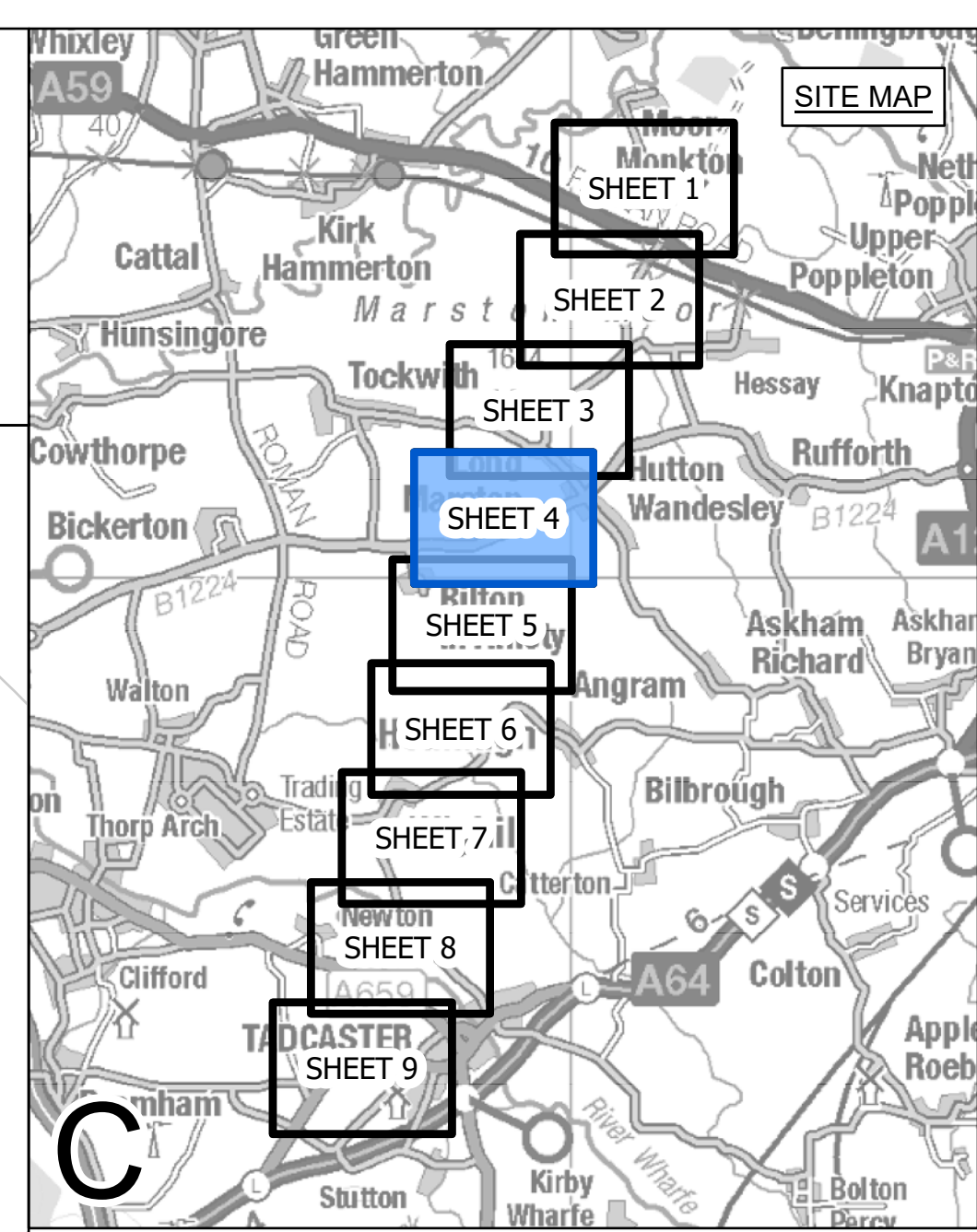
Title

NATIONAL GRID
 (YORKSHIRE GREEN ENERGY
 ENABLEMENT PROJECT) ORDER
 LAND PLAN
 REGULATION 5(2)(i) - (ii)(iii)
 SECTION C, SHEET 3 OF 9

Application Number		EN020024	
National Grid Drawing Reference			
DCO_C/LP/PS/03			
Scale	Sheet Size	Sheet	Issue
1:2,500	A0	SHEET 3 OF 9	B



NATIONAL GRID (YORKSHIRE GREEN ENERGY ENABLEMENT PROJECT) ORDER
 LAND PLAN
 REGULATION 5(2)(i) - (ii)(iii)
 SECTION C, SHEET 4 OF 9



- LEGEND**
- LOCAL AUTHORITY BOUNDARY
 - SECTION BOUNDARY
 - ORDER LIMITS
- PLOTS**
- CLASS 2 - COMPULSORY ACQUISITION OF RIGHTS FOR THE AUTHORISED DEVELOPMENT
 - CLASS 3 - COMPULSORY ACQUISITION OF RIGHTS OF ACCESS
 - CLASS 4 - TEMPORARY USE FOR CONSTRUCTION AND MITIGATION
 - CLASS 6 - TEMPORARY USE FOR ACCESS

Notes
 This drawing is scaled at paper size A0, therefore any prints taken at smaller sizes will affect accuracy of the measurement units and should not be scaled against.

All easements, servitudes and private rights are proposed to be extinguished on land that is to be acquired unless stated otherwise in the Book of Reference (Volume 4, Document 4.3).

For additional detail on the plan suites, please refer to Document 2.3 Plan Guidance Document, located in Volume 2 of the DCO Application.

The local authorities' boundaries and titles are correct at the time of submission. North Yorkshire County Council and its 7 districts are expected to form a new single council (North Yorkshire Council) on 1 April 2023.

Coordinate System: British National Grid
 Sheet X Centroid Coordinate: 449024 Sheet Y Centroid Coordinate: 450854



BACKGROUND MAPPING INFORMATION HAS BEEN REPRODUCED FROM THE ORDNANCE SURVEY BY PERMISSION OF ORDNANCE SURVEY OF THE CONTROLLER OF HER MAJESTY'S STATIONERY OFFICE. CROWN COPYRIGHT ORDNANCE SURVEY ©. BLUESKY INTERNATIONAL LTD ©. NATIONAL GRID ELECTRICITY - 100024241.

Issue	Date	Remarks	Drawn	Checked	Approved
B	14/02/2023	S51 ADVICE UPDATE	MG	SF	EMD
A	01/11/2022	FOR DCO SUBMISSION	MG	SF	EMD

Title
 NATIONAL GRID
 (YORKSHIRE GREEN ENERGY ENABLEMENT PROJECT) ORDER
 LAND PLAN
 REGULATION 5(2)(i) - (ii)(iii)
 SECTION C, SHEET 4 OF 9

Application Number		EN020024		
National Grid Drawing Reference				
DCO_C/LP/PS/04				
Scale	Sheet Size	Sheet	Issue	
1:2,500	A0	SHEET 4 OF 9	B	



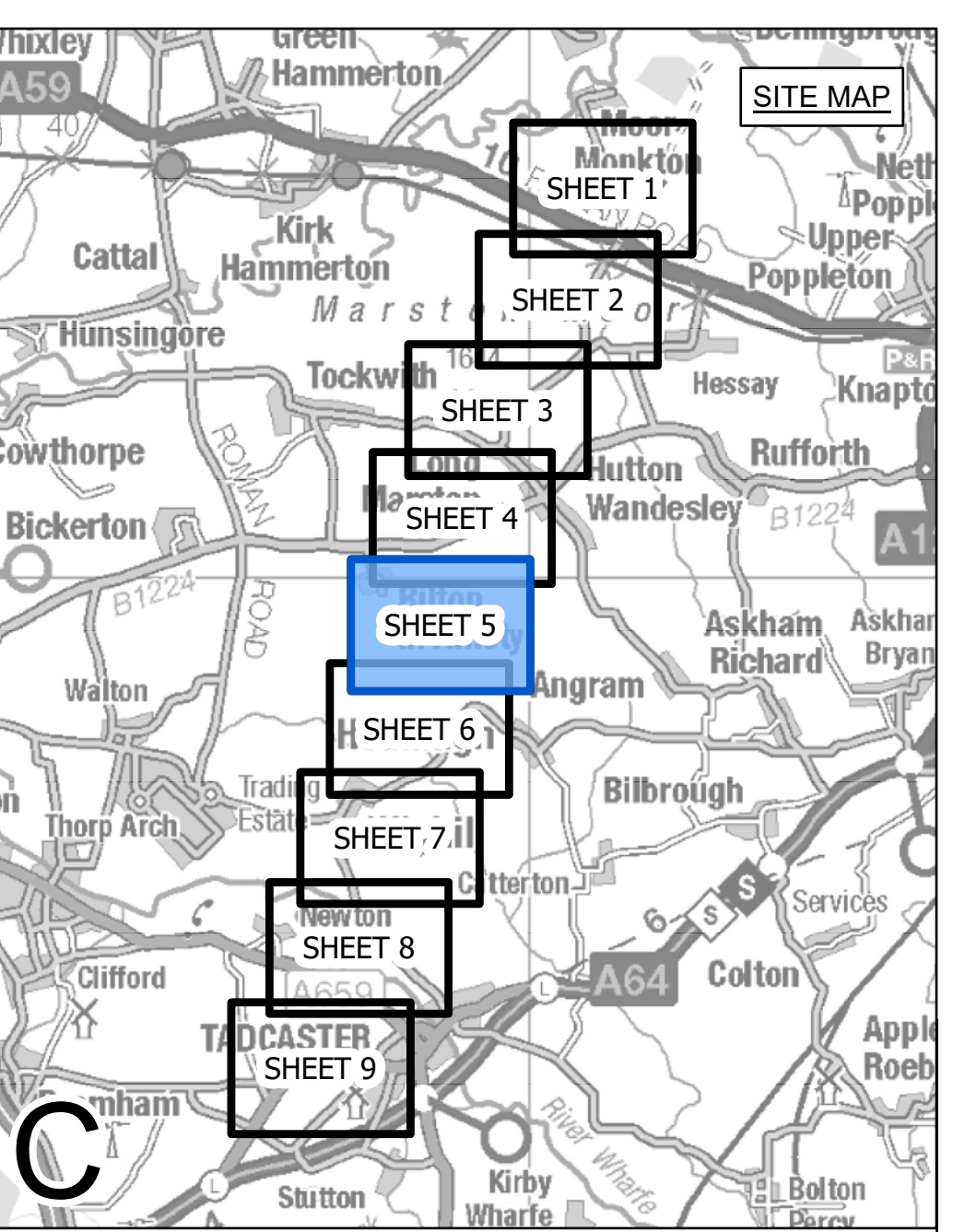
NATIONAL GRID (YORKSHIRE GREEN ENERGY ENABLEMENT PROJECT) ORDER
 LAND PLAN
 REGULATION 5(2)(i) - (ii)(iii)
 SECTION C, SHEET 5 OF 9



Bilton-in-Ainsty

FOR CONTINUATION SEE SHEET 4

FOR CONTINUATION SEE SHEET 6



- LEGEND**
- LOCAL AUTHORITY BOUNDARY
 - SECTION BOUNDARY
 - ORDER LIMITS
- PLOTS**
- CLASS 2 - COMPULSORY ACQUISITION OF RIGHTS FOR THE AUTHORISED DEVELOPMENT
 - CLASS 3 - COMPULSORY ACQUISITION OF RIGHTS OF ACCESS
 - CLASS 4 - TEMPORARY USE FOR CONSTRUCTION AND MITIGATION
 - CLASS 6 - TEMPORARY USE FOR ACCESS

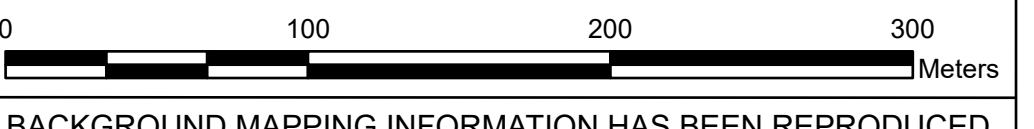
Notes
 This drawing is scaled at paper size A0, therefore any prints taken at smaller sizes will affect accuracy of the measurement units and should not be scaled against.

All easements, servitudes and private rights are proposed to be extinguished on land that is to be acquired unless stated otherwise in the Book of Reference (Volume 4, Document 4.3).

For additional detail on the plan suites, please refer to Document 2.3 Plan Guidance Document, located in Volume 2 of the DCO Application.

The local authorities' boundaries and titles are correct at the time of submission. North Yorkshire County Council and its 7 districts are expected to form a new single council (North Yorkshire Council) on 1 April 2023.

Coordinate System: British National Grid
 Sheet X Centroid Coordinate: 448712 Sheet Y Centroid Coordinate: 445318



BACKGROUND MAPPING INFORMATION HAS BEEN REPRODUCED FROM THE ORDNANCE SURVEY BY PERMISSION OF ORDNANCE SURVEY OF THE CONTROLLER OF HER MAJESTY'S STATIONERY OFFICE. CROWN COPYRIGHT ORDNANCE SURVEY ©. BLUESKY INTERNATIONAL LTD ©. NATIONAL GRID ELECTRICITY - 100024241.

Issue	Date	Remarks	Drawn	Checked	Approved
B	14/02/2023	S51 ADVICE UPDATE	MG	SF	EMD
A	01/11/2022	FOR DCO SUBMISSION	MG	SF	EMD

Title

NATIONAL GRID
 (YORKSHIRE GREEN ENERGY
 ENABLEMENT PROJECT) ORDER
 LAND PLAN
 REGULATION 5(2)(i) - (ii)(iii)
 SECTION C, SHEET 5 OF 9



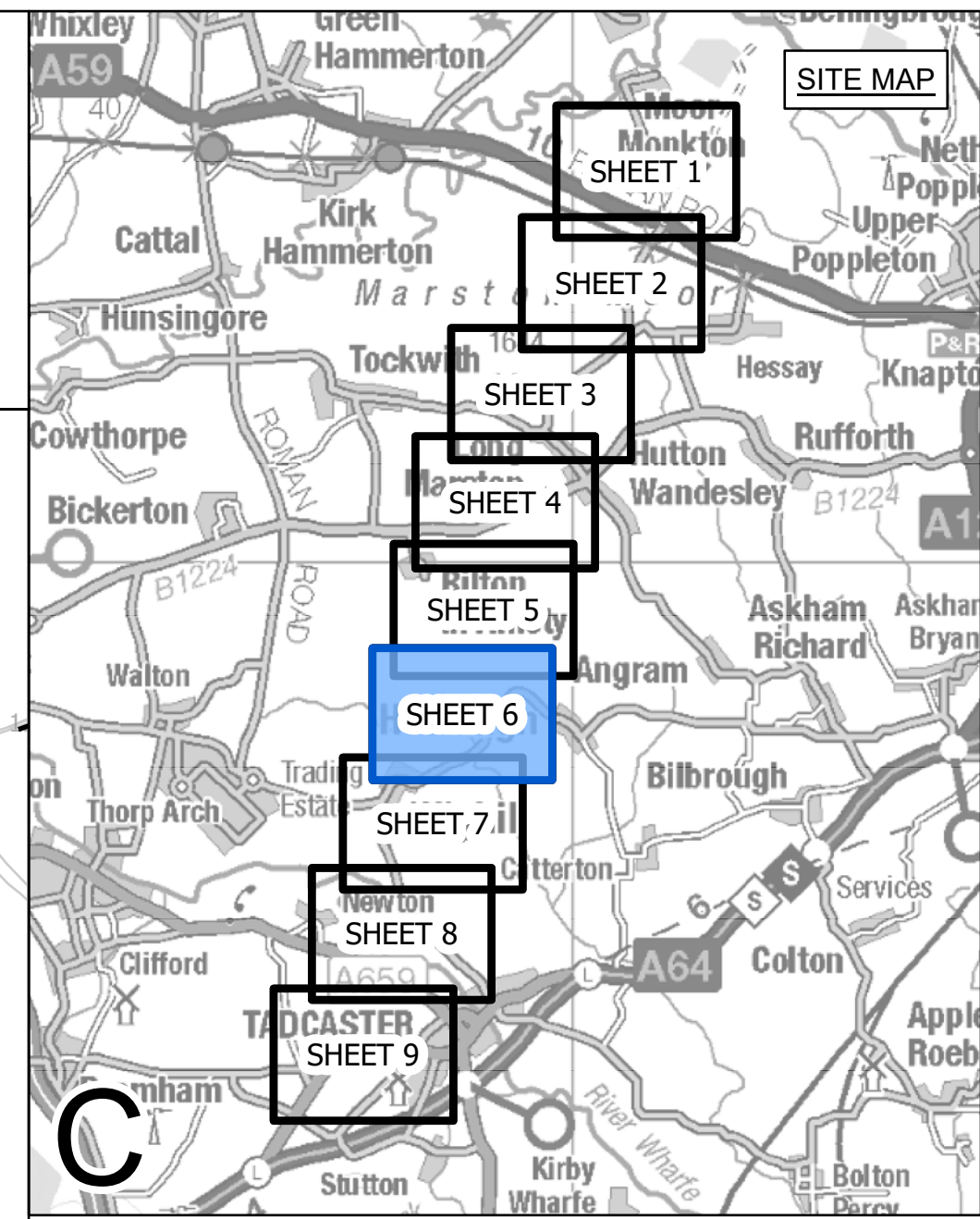
Application Number: EN020024

National Grid Drawing Reference: DCO_C/LP/PS/05

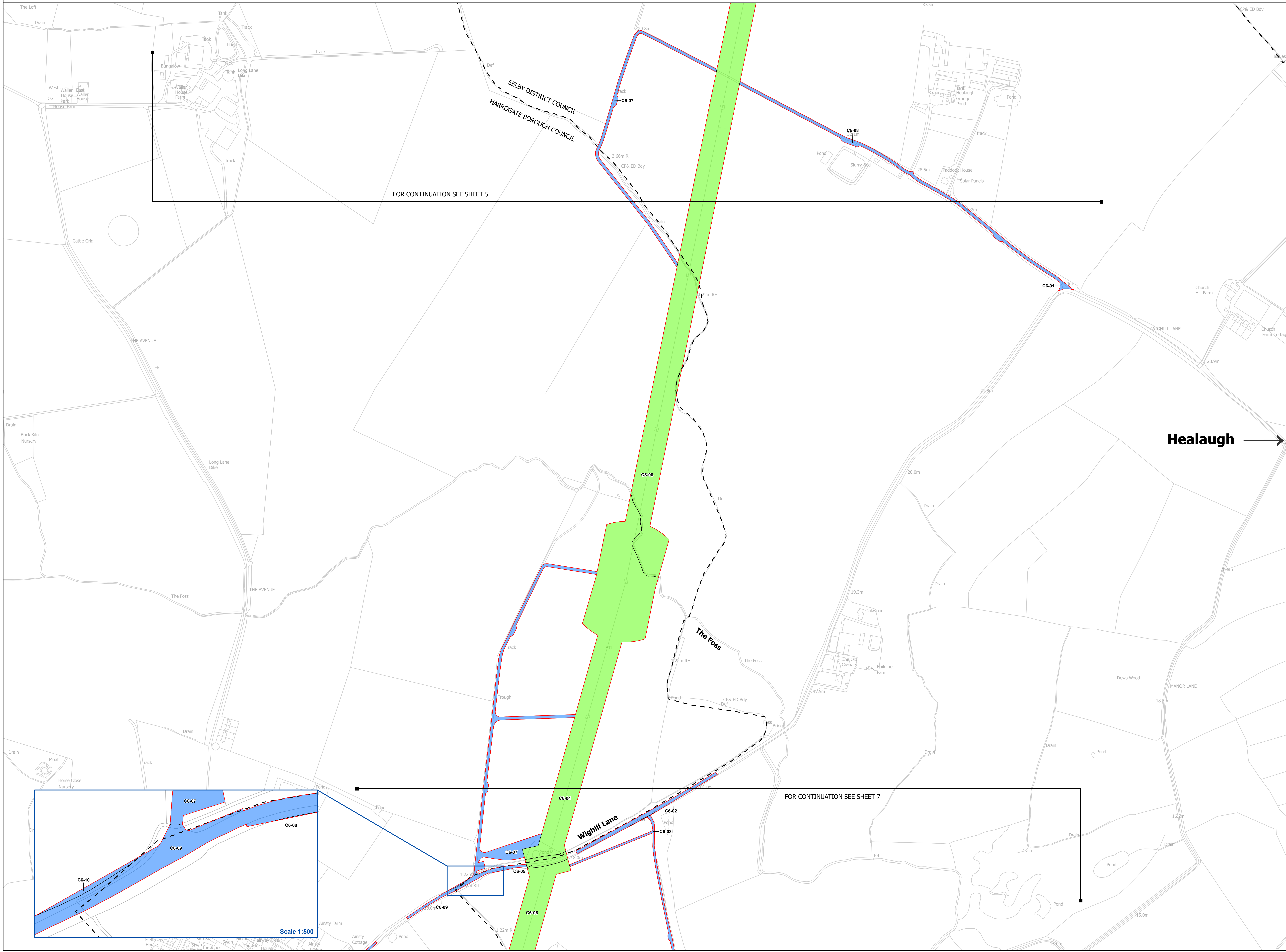
Scale	Sheet Size	Sheet	Issue
1:2,500	A0	SHEET 5 OF 9	B



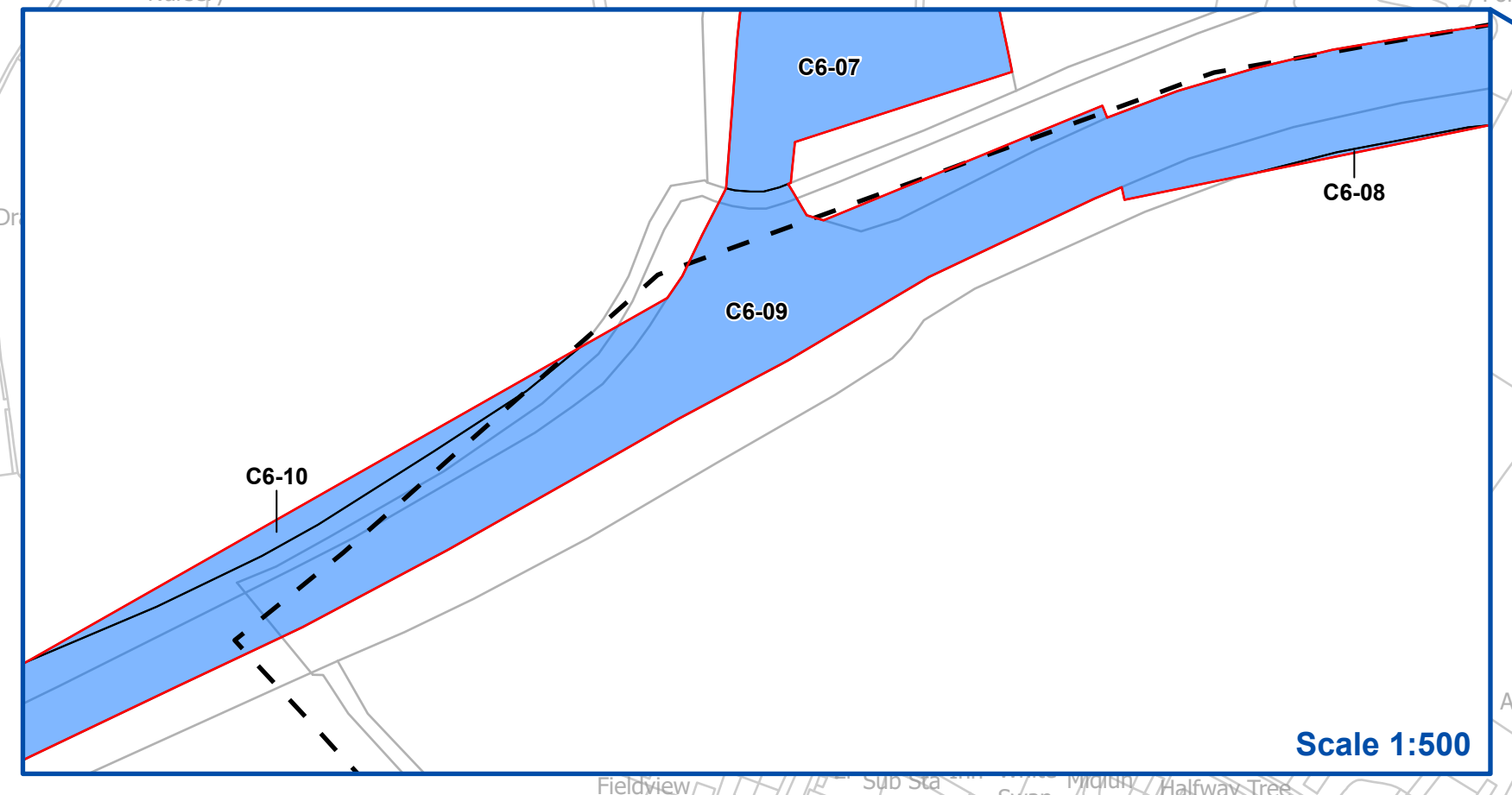
NATIONAL GRID (YORKSHIRE GREEN ENERGY ENABLEMENT PROJECT) ORDER
 LAND PLAN
 REGULATION 5(2)(i) - (ii)(iii)
 SECTION C, SHEET 6 OF 9



- LEGEND**
- LOCAL AUTHORITY BOUNDARY
 - SECTION BOUNDARY
 - ORDER LIMITS
- PLOTS**
- CLASS 2 - COMPULSORY ACQUISITION OF RIGHTS FOR THE AUTHORISED DEVELOPMENT
 - CLASS 3 - COMPULSORY ACQUISITION OF RIGHTS OF ACCESS
 - CLASS 4 - TEMPORARY USE FOR CONSTRUCTION AND MITIGATION
 - CLASS 6 - TEMPORARY USE FOR ACCESS



Healough →



Notes

This drawing is scaled at paper size A0, therefore any prints taken at smaller sizes will affect accuracy of the measurement units and should not be scaled against.

All easements, servitudes and private rights are proposed to be extinguished on land that is to be acquired unless stated otherwise in the Book of Reference (Volume 4, Document 4.3).

For additional detail on the plan suites, please refer to Document 2.3 Plan Guidance Document, located in Volume 2 of the DCO Application.

The local authorities' boundaries and titles are correct at the time of submission. North Yorkshire County Council and its 7 districts are expected to form a new single council (North Yorkshire Council) on 1 April 2023.

Coordinate System: British National Grid
 Sheet X Centroid Coordinate: 448409 Sheet Y Centroid Coordinate: 447826



BACKGROUND MAPPING INFORMATION HAS BEEN REPRODUCED FROM THE ORDNANCE SURVEY BY PERMISSION OF ORDNANCE SURVEY OF THE CONTROLLER OF HER MAJESTY'S STATIONERY OFFICE. CROWN COPYRIGHT ORDNANCE SURVEY ©. BLUESKY INTERNATIONAL LTD ©. NATIONAL GRID ELECTRICITY - 100024241.

Issue	Date	Remarks	Drawn	Checked	Approved
B	14/02/2023	S51 ADVICE UPDATE	MG	SF	EMD
A	01/11/2022	FOR DCO SUBMISSION	MG	SF	EMD

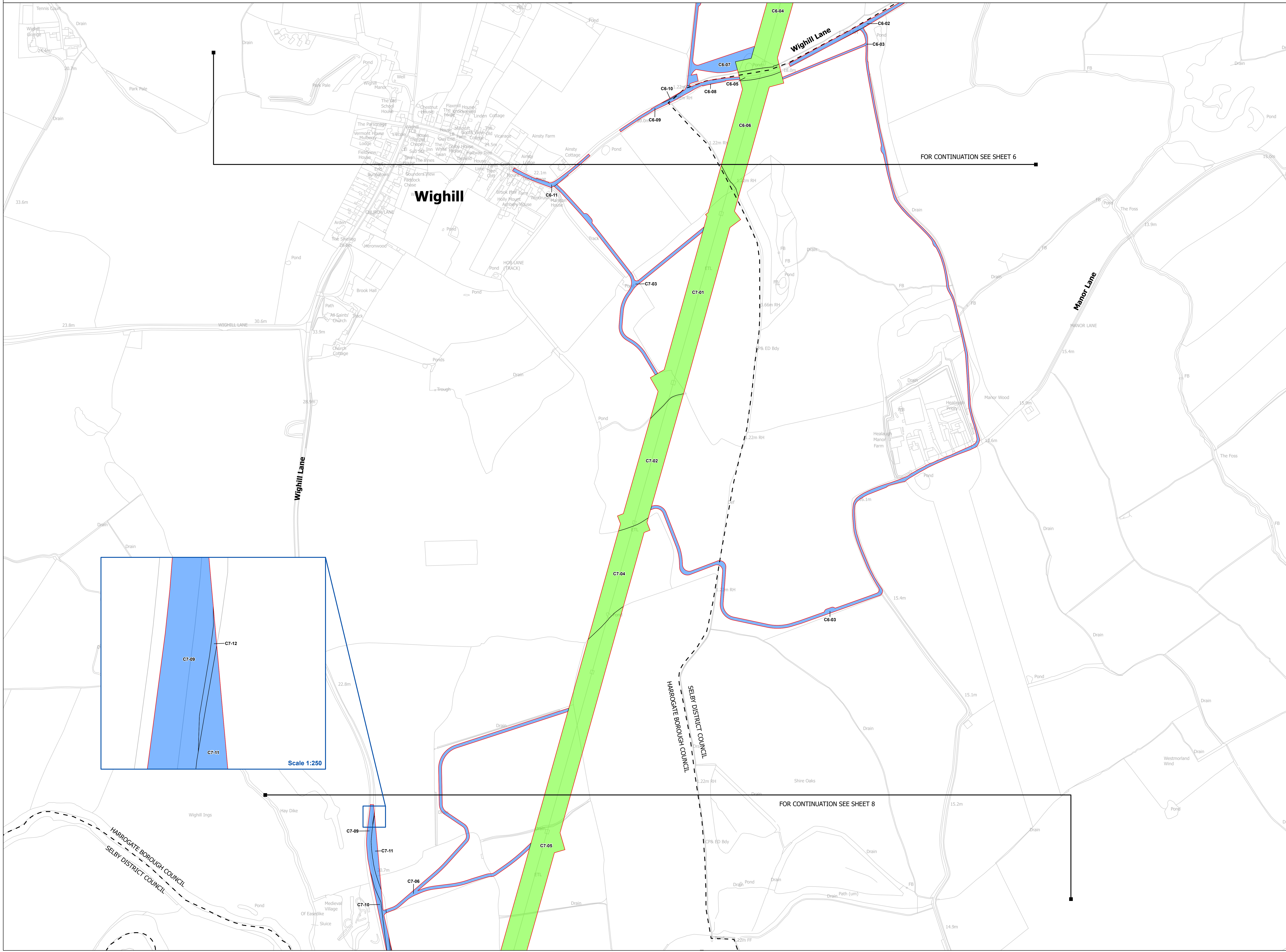
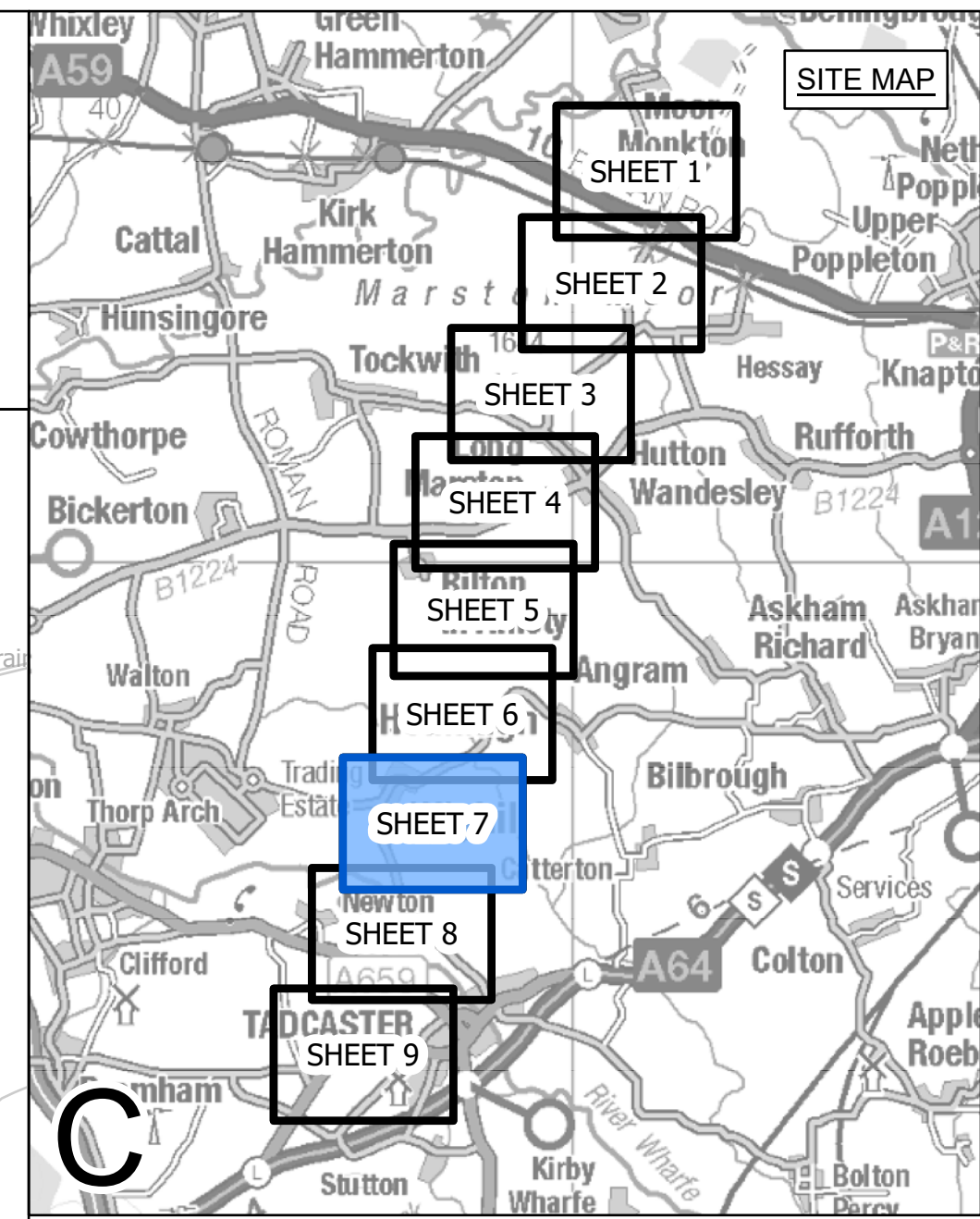
Title

NATIONAL GRID
 (YORKSHIRE GREEN ENERGY
 ENABLEMENT PROJECT) ORDER
 LAND PLAN
 REGULATION 5(2)(i) - (ii)(iii)
 SECTION C, SHEET 6 OF 9

nationalgrid			
Application Number	EN020024		
National Grid Drawing Reference DCO_C/LP/PS/06			
Scale	Sheet Size	Sheet	Issue
1:2,500	A0	SHEET 6 OF 9	B

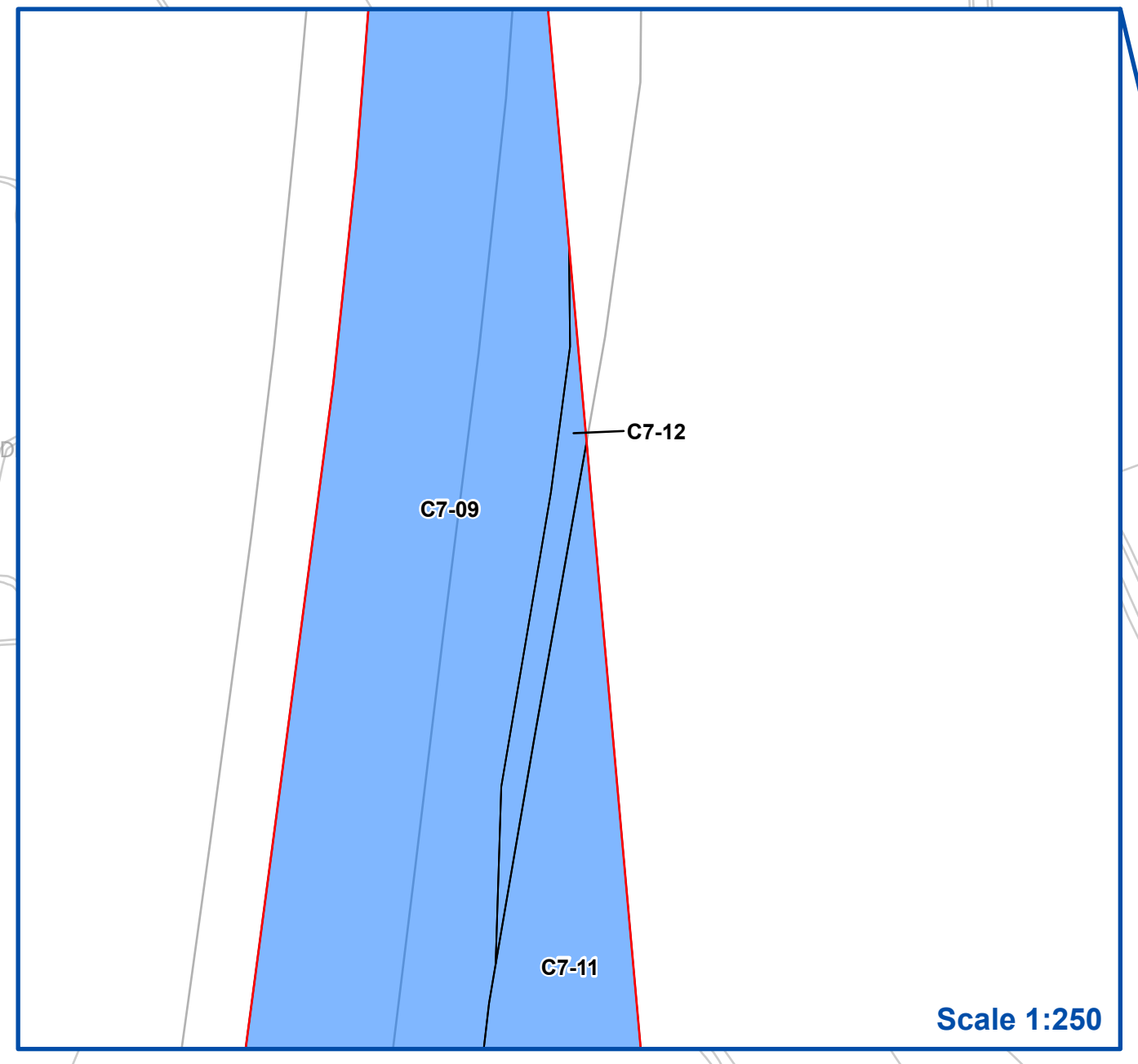


NATIONAL GRID (YORKSHIRE GREEN ENERGY ENABLEMENT PROJECT) ORDER
 LAND PLAN
 REGULATION 5(2)(i) - (ii)(iii)
 SECTION C, SHEET 7 OF 9



FOR CONTINUATION SEE SHEET 6

FOR CONTINUATION SEE SHEET 8



- LEGEND**
- LOCAL AUTHORITY BOUNDARY
 - SECTION BOUNDARY
 - ORDER LIMITS
- PLOTS**
- CLASS 2 - COMPULSORY ACQUISITION OF RIGHTS FOR THE AUTHORISED DEVELOPMENT
 - CLASS 3 - COMPULSORY ACQUISITION OF RIGHTS OF ACCESS
 - CLASS 4 - TEMPORARY USE FOR CONSTRUCTION AND MITIGATION
 - CLASS 6 - TEMPORARY USE FOR ACCESS

Notes
 This drawing is scaled at paper size A0, therefore any prints taken at smaller sizes will affect accuracy of the measurement units and should not be scaled against.

All easements, servitudes and private rights are proposed to be extinguished on land that is to be acquired unless stated otherwise in the Book of Reference (Volume 4, Document 4.3).

For additional detail on the plan suites, please refer to Document 2.3 Plan Guidance Document, located in Volume 2 of the DCO Application.

The local authorities' boundaries and titles are correct at the time of submission. North Yorkshire County Council and its 7 districts are expected to form a new single council (North Yorkshire Council) on 1 April 2023.

Coordinate System: British National Grid
 Sheet X Centroid Coordinate: 447986 Sheet Y Centroid Coordinate: 446260



BACKGROUND MAPPING INFORMATION HAS BEEN REPRODUCED FROM THE ORDNANCE SURVEY BY PERMISSION OF ORDNANCE SURVEY OF THE CONTROLLER OF HER MAJESTY'S STATIONERY OFFICE. CROWN COPYRIGHT ORDNANCE SURVEY ©. BLUESKY INTERNATIONAL LTD ©. NATIONAL GRID ELECTRICITY - 100024241.

Issue	Date	Remarks	Drawn	Checked	Approved
B	14/02/2023	S51 ADVICE UPDATE	MG	SF	EMD
A	01/11/2022	FOR DCO SUBMISSION	MG	SF	EMD

Title
 NATIONAL GRID (YORKSHIRE GREEN ENERGY ENABLEMENT PROJECT) ORDER
 LAND PLAN
 REGULATION 5(2)(i) - (ii)(iii)
 SECTION C, SHEET 7 OF 9



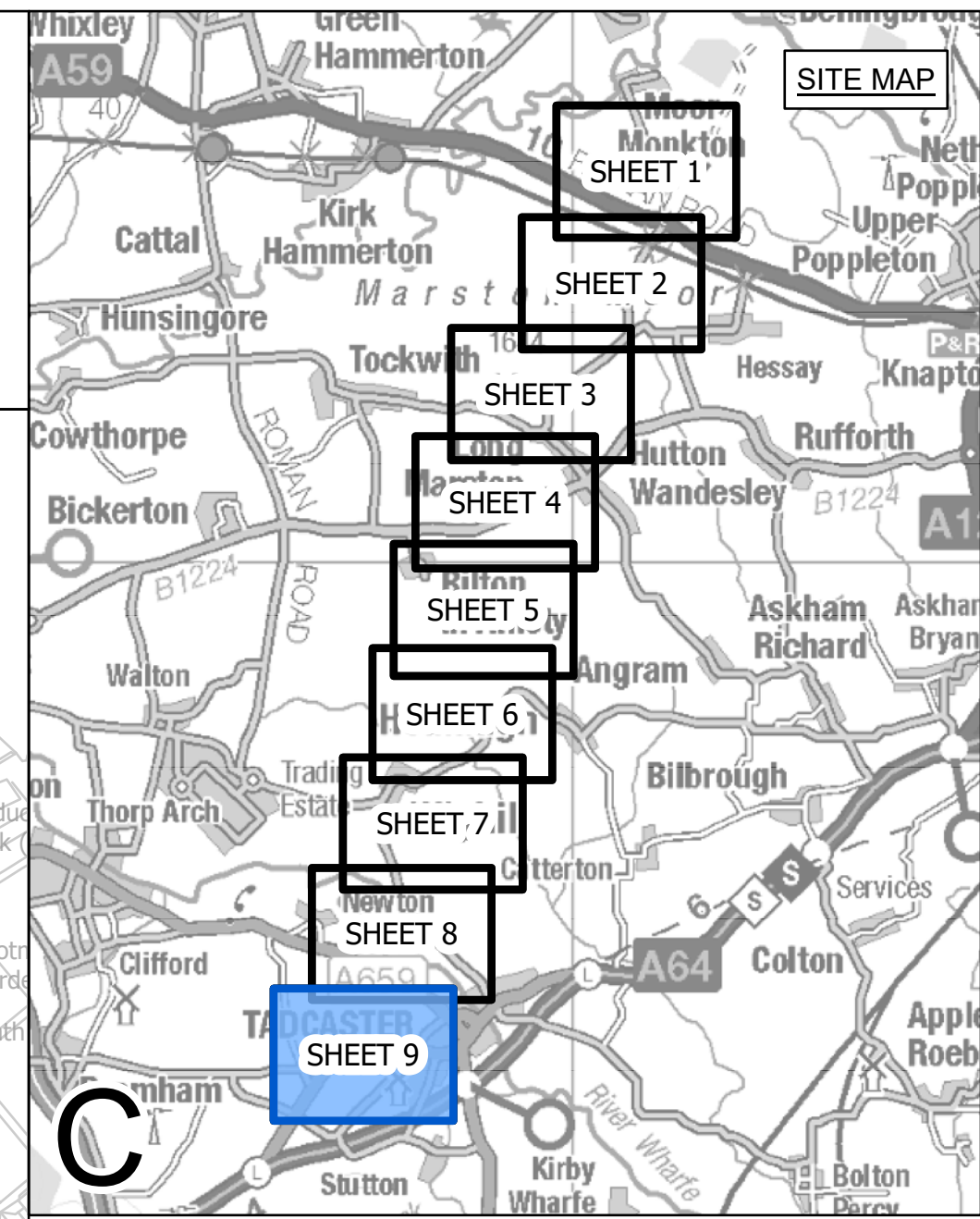
Application Number: EN020024

National Grid Drawing Reference: DCO_C/LP/PS/07

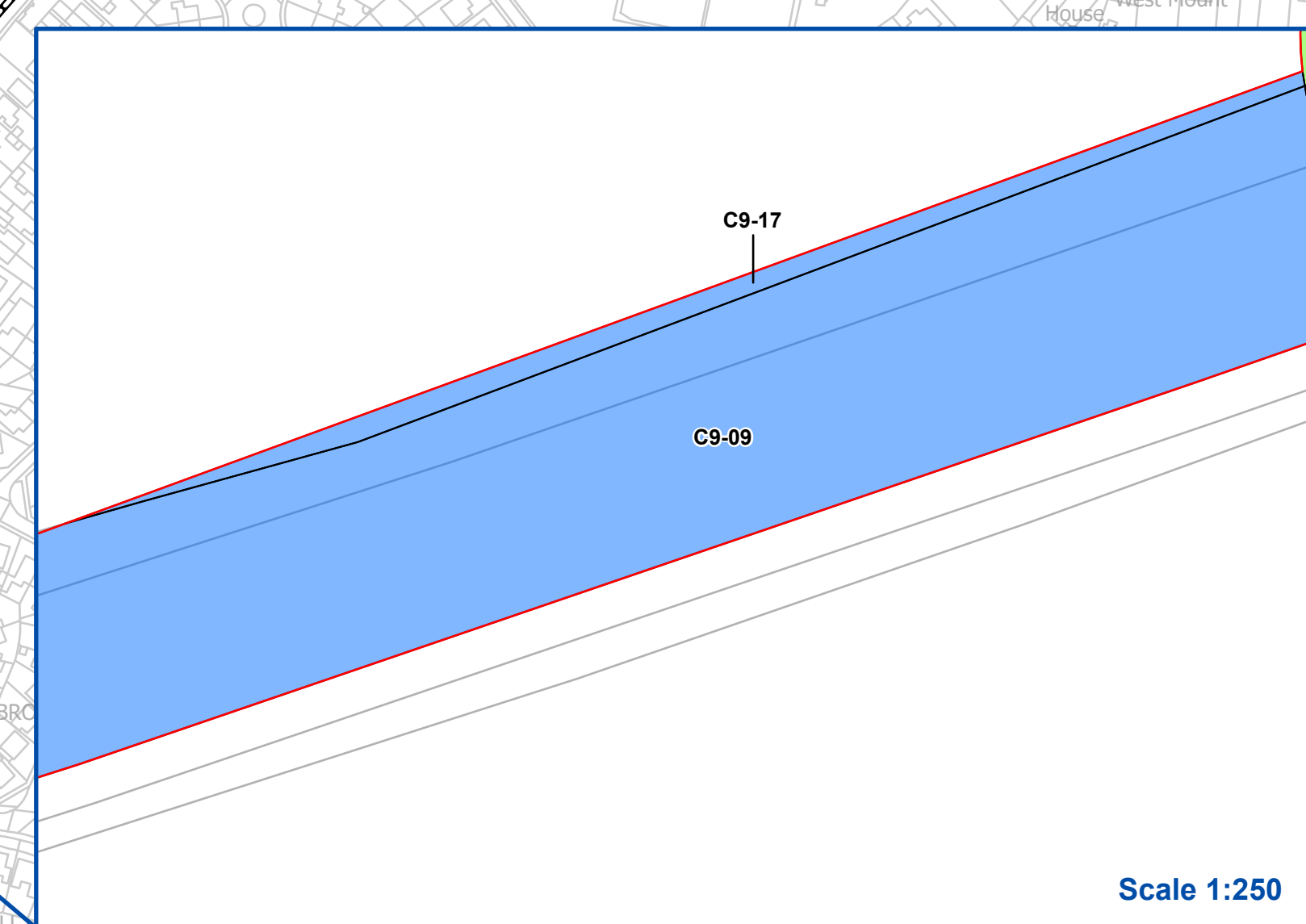
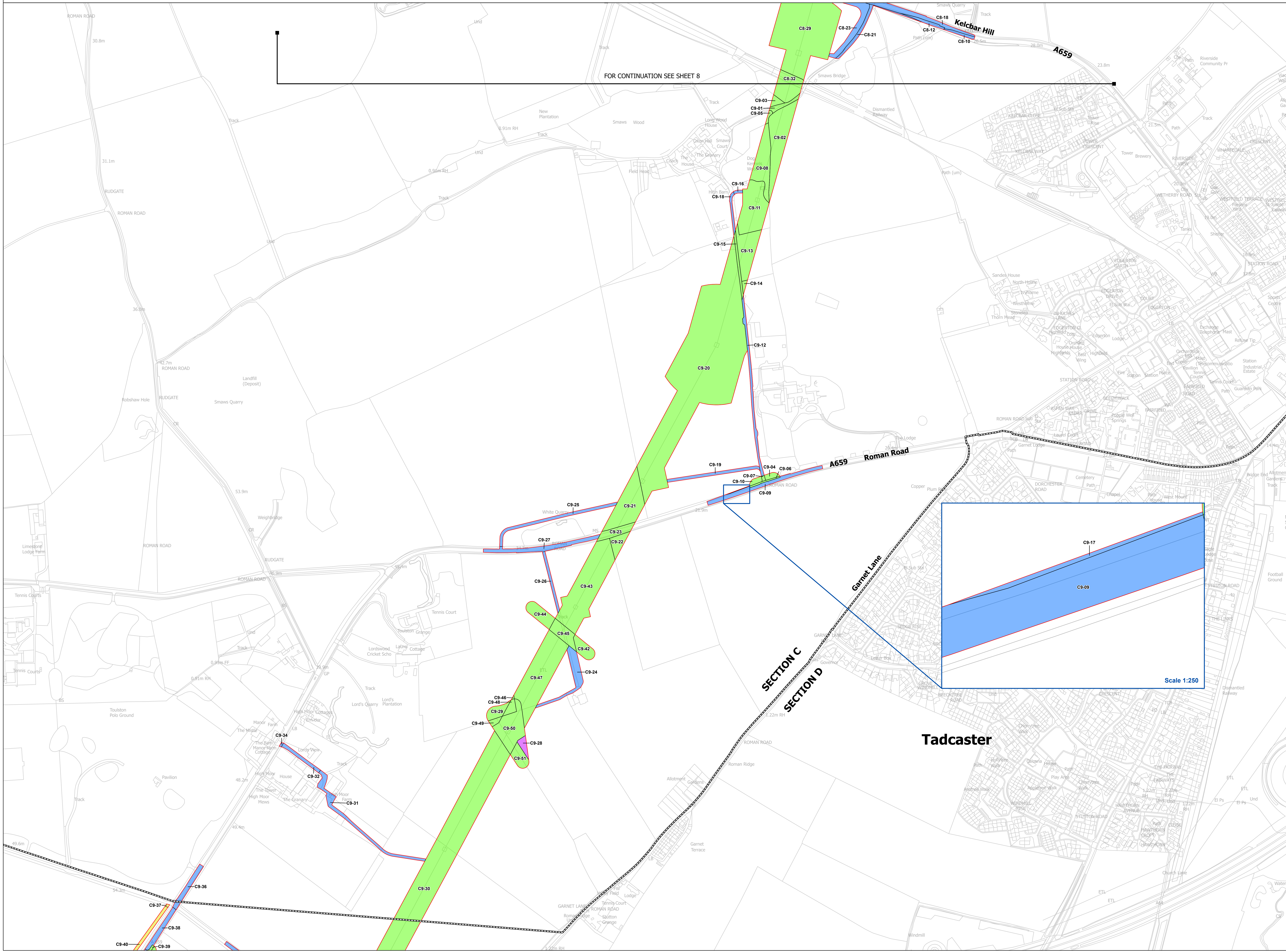
Scale	Sheet Size	Sheet	Issue
1:2,500	A0	SHEET 7 OF 9	B



NATIONAL GRID (YORKSHIRE GREEN ENERGY ENABLEMENT PROJECT) ORDER
 LAND PLAN
 REGULATION 5(2)(i) - (ii)(iii)
 SECTION C, SHEET 9 OF 9



- LEGEND**
- LOCAL AUTHORITY BOUNDARY
 - SECTION BOUNDARY
 - ORDER LIMITS
- PLOTS**
- CLASS 2 - COMPULSORY ACQUISITION OF RIGHTS FOR THE AUTHORISED DEVELOPMENT
 - CLASS 3 - COMPULSORY ACQUISITION OF RIGHTS OF ACCESS
 - CLASS 4 - TEMPORARY USE FOR CONSTRUCTION AND MITIGATION
 - CLASS 6 - TEMPORARY USE FOR ACCESS



Notes

This drawing is scaled at paper size A0, therefore any prints taken at smaller sizes will affect accuracy of the measurement units and should not be scaled against.

All easements, servitudes and private rights are proposed to be extinguished on land that is to be acquired unless stated otherwise in the Book of Reference (Volume 4, Document 4.3).

For additional detail on the plan suites, please refer to Document 2.3 Plan Guidance Document, located in Volume 2 of the DCO Application.

The local authorities' boundaries and titles are correct at the time of submission. North Yorkshire County Council and its 7 districts are expected to form a new single council (North Yorkshire Council) on 1 April 2023.

Coordinate System: British National Grid
 Sheet X Centroid Coordinate: 446992 Sheet Y Centroid Coordinate: 442956

0 100 200 300 Meters

BACKGROUND MAPPING INFORMATION HAS BEEN REPRODUCED FROM THE ORDNANCE SURVEY BY PERMISSION OF ORDNANCE SURVEY OF THE CONTROLLER OF HER MAJESTY'S STATIONERY OFFICE. CROWN COPYRIGHT ORDNANCE SURVEY ©. BLUESKY INTERNATIONAL LTD ©. NATIONAL GRID ELECTRICITY - 100024241.

Issue	Date	Remarks	Drawn	Checked	Approved
B	14/02/2023	S51 ADVICE UPDATE	MG	SF	EMD
A	01/11/2022	FOR DCO SUBMISSION	MG	SF	EMD

Title			
NATIONAL GRID (YORKSHIRE GREEN ENERGY ENABLEMENT PROJECT) ORDER LAND PLAN REGULATION 5(2)(i) - (ii)(iii) SECTION C, SHEET 9 OF 9			
Application Number		EN020024	
National Grid Drawing Reference			
DCO_C/LP/PS/09			
Scale	Sheet Size	Sheet	Issue
1:2,500	A0	SHEET 9 OF 9	B

**National Grid plc
National Grid House,
Warwick Technology Park,
Gallows Hill, Warwick.
CV34 6DA United Kingdom**

**Registered in England and
Wales
No. 4031152**

